



COMPANY PROFILE

SDE TECH

A trusted partner in industrial technology, automation, and digitalization solutions.

Present by: **SDE TECH**

TABLE OF CONTENT

01 ABOUT SDE DIGITAL TECHNOLOGY COMPANY LIMITED

02 PRODUCTS & SERVICES

03 KEY PROJECTS

04 CLIENTS & PARTNERS

05 CONTACT INFORMATION



01 ABOUT US

Established in 2014, **SDE Digital Technology Company Limited (SDE TECH)** is a pioneering provider of digital transformation solutions and advanced **CAD/CAM/CAE** software in Vietnam.

SDE Tech delivers a comprehensive technology ecosystem, including **Cadmould Flex, Particleworks, Granuleworks, ManusSIM, VoluMill, CrownCAD, EVO Solutions, VI-grade**, enabling enterprises to optimize mold design, simulate machining processes, and significantly enhance manufacturing productivity.

Backed by a team of highly experienced engineers, **SDE TECH** is a trusted partner of numerous enterprises and educational institutions across key industries such as Mechanical Engineering, Automotive, Aerospace, Electronics, and Medical Devices.



02

OUR JOURNEY

SDE Tech – Built upon 30 years of expertise and the technical heritage of our leadership.



1998 – 2004

Operated Smart Digital Engineering (precursor). Executed high-end outsourcing & technology transfer for FDI enterprises.



2011

Officially renamed to **SDE Digital Technology Co., Ltd**
SDE Tech subsequently became a **Smart Expert Partner** of Siemens Digital Industries Software in the Asia-Pacific region



2019 – 2024

In parallel, SDE Tech has expanded its international cooperation network, becoming a commercial partner of leading global technology providers such as **Celeritive (VoluMill), Simcon (CADMould), and MANUS (MANUSsim).**

Director Nguyen Huu Phuoc pioneered CAD/CAM/CAE research. Delivered advanced training & technical outsourcing projects.

2005 – 2011



Established **ProCAD Solutions Company Limited**

2018



SDE Tech has continuously received prestigious awards from Siemens Digital Industries Software, including “**Highest SMB New Logo Partner**”, “**Silver Partner**”, and “**Gold Partner**”

2025



03 VISION, MISSION & CORE VALUES

VISION

To become the leading and most reputable software solutions group in Vietnam and the Southeast Asia region.

To build and develop a comprehensive software solutions ecosystem under the SDE TECH brand.

CORE VALUES

PROFESSIONALISM & INNOVATION – TRUST – HUMAN CAPITAL

- Professionalism & innovation at work
- Dedication, responsibility, honesty with customers to create trust
- Collective strength based on solidarity and sharing

MISSION

To Customer: Constantly improving quality to bring the best product and services to meet the increasingly diverse and complex needs of customers

To Industry: Bringing **CAD/CAM/CAE/PLM/ERP** software technologies closer to users in Vietnam. Contributing to promoting the development of manufacturing industries in Vietnam

To Society: Provide solutions to improve work efficiency and effectiveness, contribute to accelerating the development of the working environment towards modernizations and environmental protection in a sustainable way

04 MESSAGE FROM THE DIRECTOR



Mr. Nguyen Huu Phuoc

Email: phuoc.ng@sde.vn

Phone: 0909 107 719

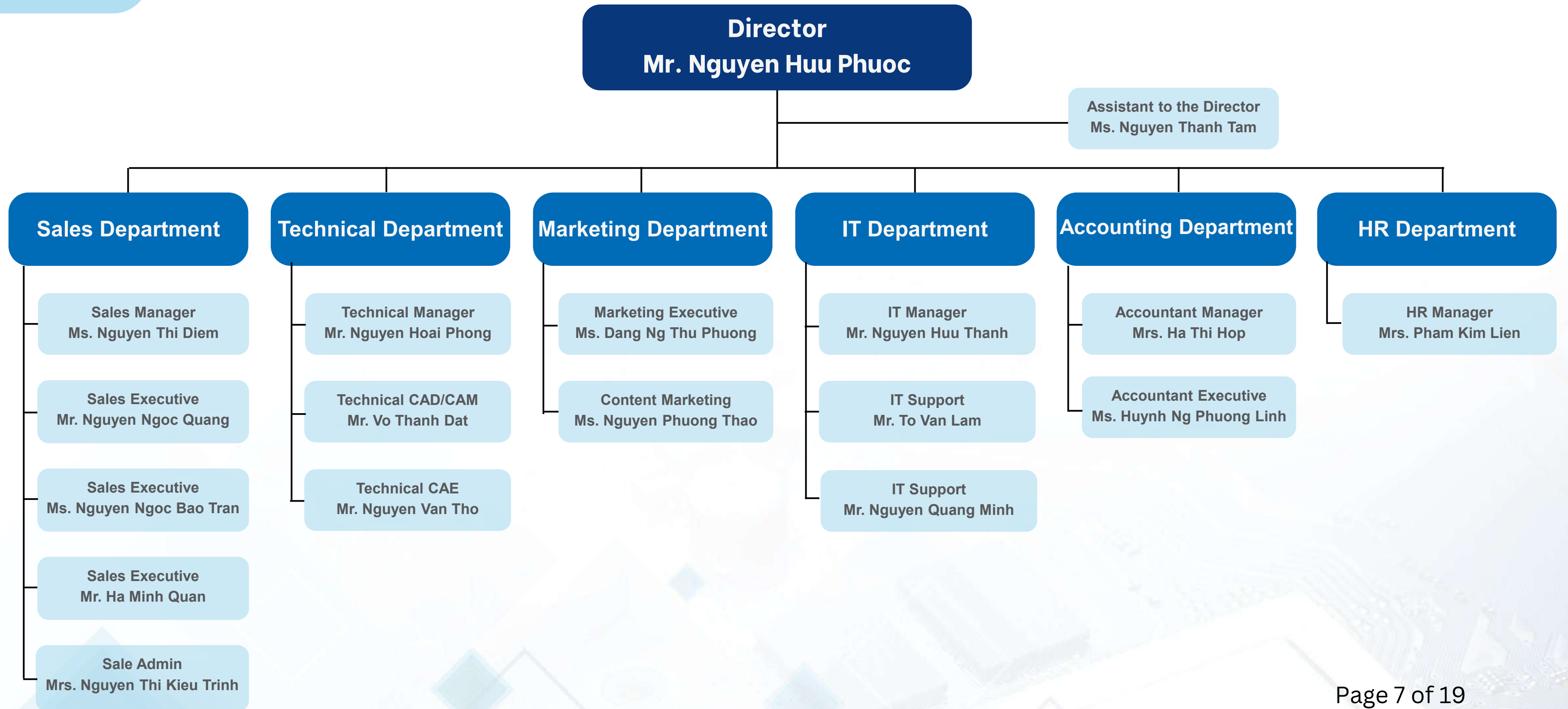
“With more than 30 years of dedication to and firsthand experience witnessing the transformation of the manufacturing industry, I have always been deeply concerned with how Vietnamese enterprises can achieve breakthroughs through technology. At SDE TECH, we do not merely deliver software—we deliver comprehensive solutions and long-term partnership.

With all our experience and commitment, together with the SDE TECH team, I pledge to bring the most practical and tangible value to our customers, helping them optimize production and be fully prepared for the global digital transformation era.”

Mr. Nguyen Huu Phuoc
Director of SDE TECH

05

ORGANIZATIONAL CHART



06 PARTNERS

Official Commercial Partners in Vietnam



Partners of Universities



SDE TECH specializes in providing CAD/CAM/CAE/PLM solutions.

CAD – Computer-Aided Design

 CrownCAD

 SOLID EDGE

 NX

 progeCAD



CAM – Computer-Aided Manufacturing

 volumill™
by celeritive™

 TopSolid

 Mastercam

 MANUS
SIM

 NX



CAE – Computer-Aided Engineering

 CADMOULD

 Particleworks™
Particle-based simulation software for CAE

 Granuleworks®
Advanced Simulator for Granular Materials

 EVO
INFORMATIONSSYSTEME



PLM – Product Lifecycle Management

 TEAMCENTER

 VS
3D VIEWSTATION

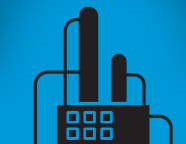


Smart Factory & Digital Manufacturing



 EVO
INFORMATIONSSYSTEME

- SCADA
- IoT Platform
- DataAnalytics
- Prometech Integration



08 SERVICES

Consulting & System Design

- Factory status assessment
- Analysis of production requirements and challenges
- Cost-optimized solution proposal
- Electrical, control, and industrial network system design

Implementation & Installation

- Control system installation
- PLC-HMI-SCADA programming
- Equipment and production line integration
- System commissioning and optimization

Maintenance & Technical Support

- Periodic Maintenance
- System troubleshooting
- Software & hardware upgrades
- Prompt technical support



TECHNICAL SUPPORT

09 TRAINING

TRAINING & HUMAN RESOURCE DEVELOPMENT

Product Training and Software Usage Training for enterprises and universities.

Technical certification is awarded upon successful completion of the training programs.



10 KEY PROJECTS

SDE Digital Technology has successfully implemented numerous projects in the fields of automation, digital transformation, system integration, and technical training for manufacturing enterprises and educational institutions nationwide.



INSTALLATION AND TRAINING OF NX SOFTWARE AT TIGER VIETNAM COMPANY

- **Challenge:** Need to enhance design capacity and standardize workflows to reduce errors.
- **Solution:** Deployed NX Mach 2 Product Design and NX EasyFill Analysis.
- **Result:** Optimized product development process and minimized technical risks through comprehensive training.

10 KEY PROJECTS



SOLID EDGE CAD/CAM IMPLEMENTATION FOR GS INDUSTRY VIETNAM

- **Challenge:** Requirement for integrated mechanical design and machining (CAD/CAM) to shorten production time.
- **Solution:** Implemented Solid Edge (Design & CAM).
- **Result:** Unified design-to-manufacturing workflow, increasing precision and efficiency.

10 KEY PROJECTS



NX CAM TRAINING & POST PROCESSOR FOR DOOSAN NPH 5500 WITH LPS AT NOR-CAL VIETNAM

- **Challenge:** Complex setup for Doosan CNCs (Fanuc Oi-Plus) with Automatic Pallet Systems (LPS).
- **Solution:**
 - Built 3D Virtual Machine models (Digital Twin) for simulation.
 - Developed custom Post Processors for Doosan NPH 5500 & LYNX series.
- **Result:** Ensured safe, precise machining and automated setup documentation.

11 KEY EVENTS



Seminar on the Application of 3D Printing Technology in Digital Manufacturing

VIMF 2018 Exhibition



Seminar “Digital Transformation Driving Creativity and Innovation in Engineering” at Nguyen Tat Thanh University

Webinar “Boosting Productivity & Reducing Risk in CNC Machining with MANUSsim” Page 15 of 19

ACHIEVEMENTS & CERTIFICATIONS



13 CUSTOMERS



14 CONTACT INFORMATION

SDE DIGITAL TECHNOLOGY CO., LTD (SDE TECH)



[SDE TECH](#)



[SDE TECH](#)



[SDE DIGITAL
TECHNOLOGY CO.,LTD](#)



[SDE TECH](#)



(+84) 909 107 719 - (+84) 85 256 2615



sales@sde.vn



HCMC Office: 96 Street No. 3B, Conic Residential Area, Binh Hung Commune, HCMC.
Hanoi Office: To Hieu Street, Nghia Tan Ward, Cau Giay District, Hanoi.

THANK YOU

